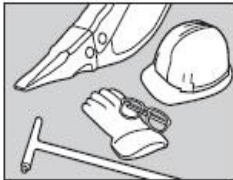
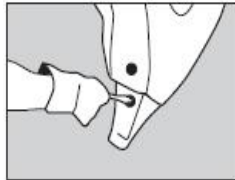


Instructions de montage et de démontage de MTGSystems Ripmet®

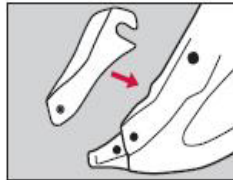
Instructions de montage



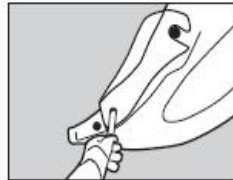
Équipement recommandé



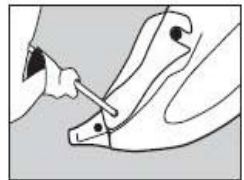
Nettoyer le porte-dents et insérer les 2 éléments de blocage



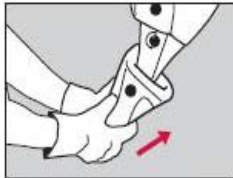
Placer le bouclier



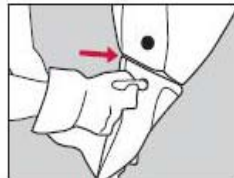
Insérer la clavette



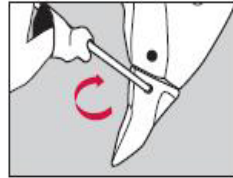
Tourner la clavette dans le sens des aiguilles d'une montre



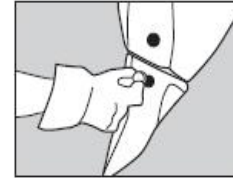
Placer la dent



Insérer la clavette

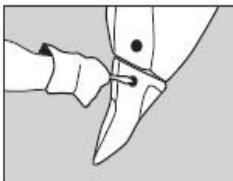


Tourner la clavette dans le sens des aiguilles d'une montre



Placer le bouchon.

Instructions de démontage



Enlever le bouchon



Tourner la clavette dans le sens contraire à celui des aiguilles d'une montre



Enlever la clavette